

# WESTSIDE CORNERS

W 192 & WESTSIDE BLVD, KISSIMMEE, FL 34747

**OUTPARCELS FOR LEASE**



**Launch Pad**  
ADVISORS, LLC

STACY MILLER MENENDEZ

407-476-1111 STACY@LAUNCHPAD-ADVISORS.COM

## FACING EAST



## FACING WEST



## PROPERTY HIGHLIGHTS

- Multiple parcels with frontage on W 192/W Irlo Bronson Memorial Hwy available
- Lighted Intersection of W 192 & Westside Blvd Southbound/Avalon road Northbound
- 1.4 miles east of US 27 and 1.8 miles west of SR 429
- Exposure to ±50,000 cars per day commuting to Disney and neighboring resorts
- High growth Four Corners area with connection roads to Champions Gate & Horizon West
- Parcels may be aggregated or divided
- 3.1 Miles from Walt Disney World

## 2021 DEMOGRAPHICS



Population  
**25,980**



Median Age  
**39.4**

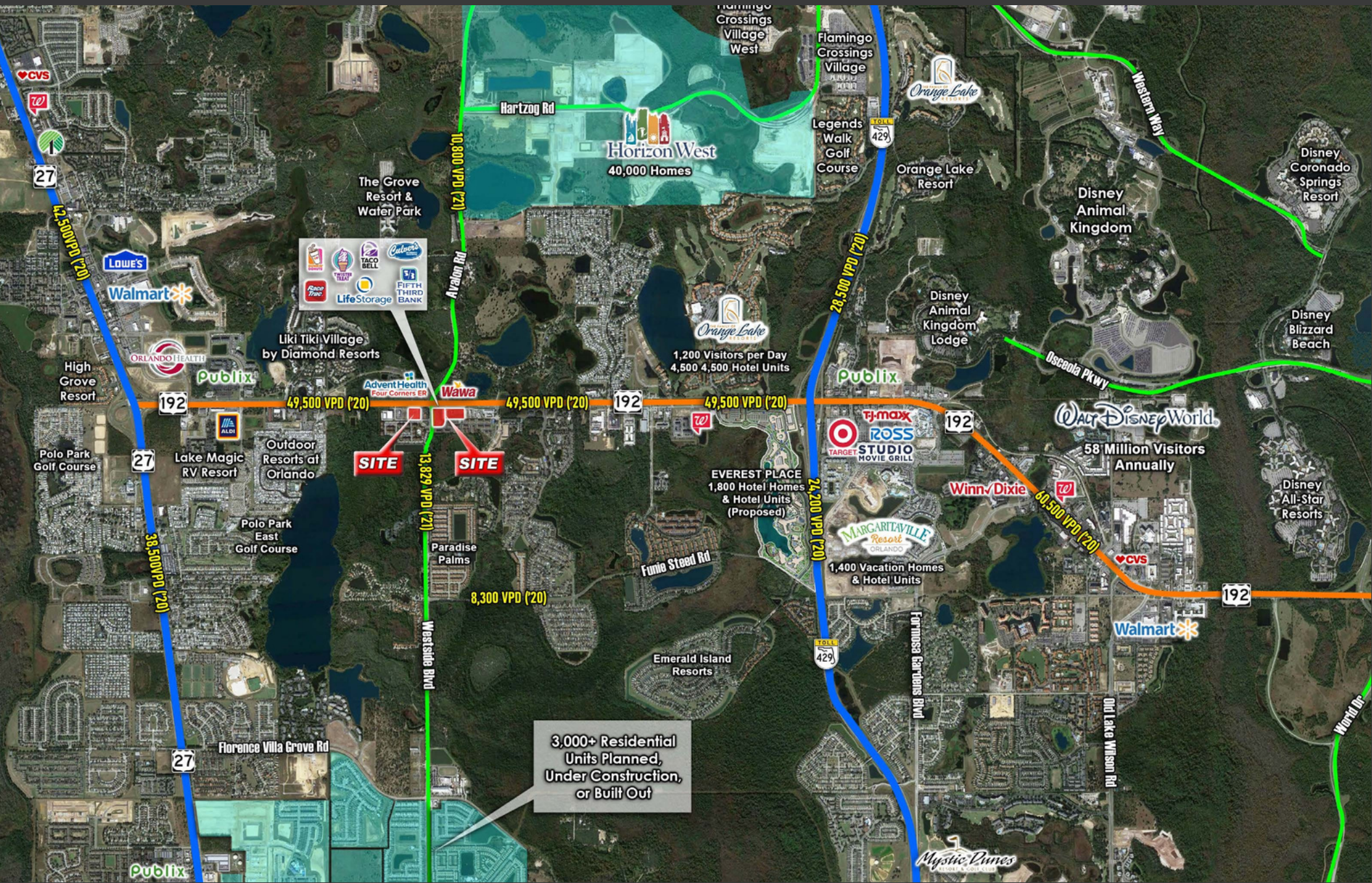


Average HH Income  
**\$70,530**

# SITE PLAN



# MARKET AERIAL



3,000+ Residential Units Planned, Under Construction, or Built Out